



THE ENTIRELY

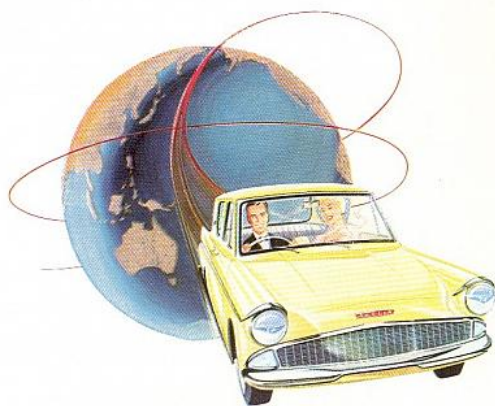
NEW

Anglia

*the world's
most exciting
light car*

THE STORY OF THE WORLD'S MOST **EXCITING** LIGHT CAR—

Anglia's
all-new and dramatically
finer design



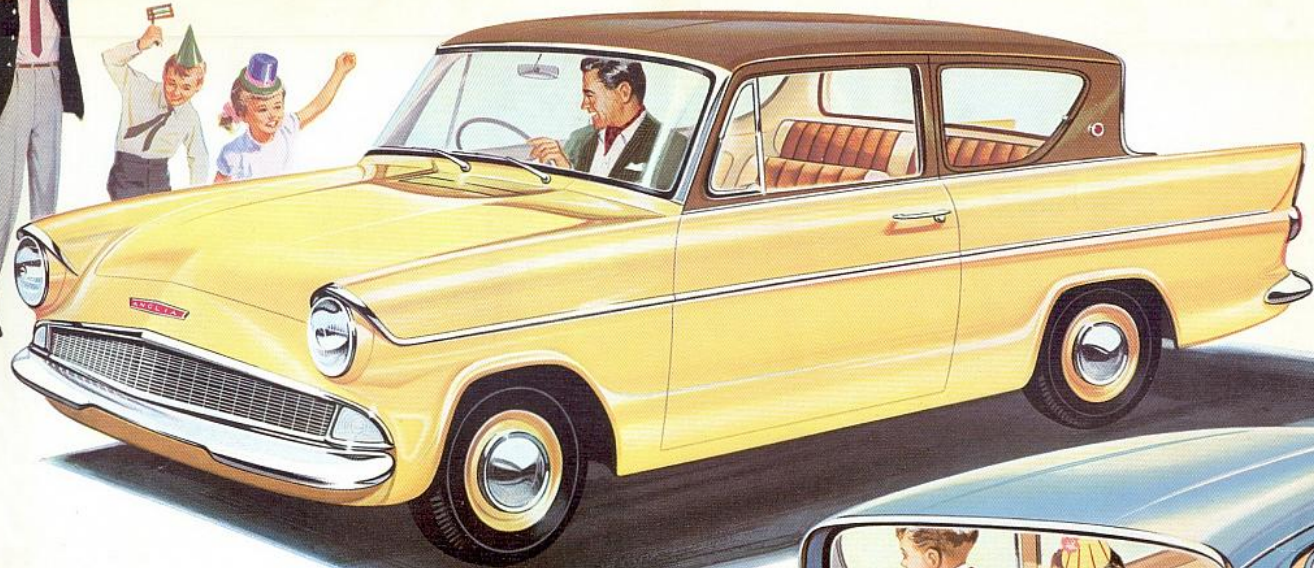
The new Anglia was born over five years ago when Ford research men, designers and creative engineers were given a simple, but formidable brief: to develop the ideal light car. They were asked to produce a car that would out-perform everything in its class, that would be more economical to run, and that would represent greater value for money than any other car available today. The challenge was made, and met, and in the years that followed, this new Anglia was designed, developed and tested. Trials of the prototype new Anglia models were the toughest and most demanding ever made on a light car. Over half a million

miles were travelled in many countries throughout the world. In Northern Scandinavia, conditions were ideal for testing cold starting. For high-speed runs, the German Autobahn and the highways of North America were used. Dust and suspension tests were made on rough tracks in East Africa. In all temperatures, climates and road conditions, Anglia fulfilled, exceeded, surpassed her designers' reckoning. Now, proud of their achievement, we introduce Anglia to you. Here is the dramatically all-new Anglia, with new O.H.V. engine and four-speed gear box; original, imaginative, stimulating, thrilling to drive; here is the world's most exciting light car.

... with AN OVER 40 M.P.G. ECONOMY that pleases and eases your budget as never before!

Low, smooth body contours which minimize wind resistance—and an engine designed with extremely high thermal efficiency. These are the chief reasons why the

exciting new Anglia combines sparkling performance with amazing economy. At normal cruising speeds with a full complement of four adults on board, over forty miles to the gallon are yours!



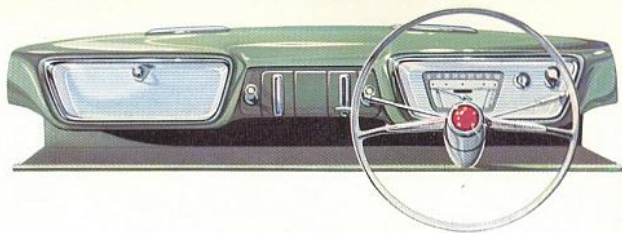
Everywhere you look, Anglia is excitingly new.

Everywhere, too, Anglia's styling is complemented by outstanding functional advantages. The wide, low, sleekly sloping bonnet perfectly expresses brisk acceleration and sustained speed—and provides maximum visibility. The revolutionary, distinctive, swept-back rear window increases rearwards vision and provides more head room and sun protection for back-seat passengers.



Once your hands are on this wheel, enjoyment begins.

Instantly visible, the neat group of instruments includes fuel and temperature gauges. Every control is completely accessible. A turn of the key actions both ignition and starter. Even the turn indicator lever operates with a flick of a finger without your hands leaving the wheel. The wheel itself has an extra safety factor in its deep, "dished" design. Everything is planned for ease and convenience from lockable glove box to full width parcels tray.

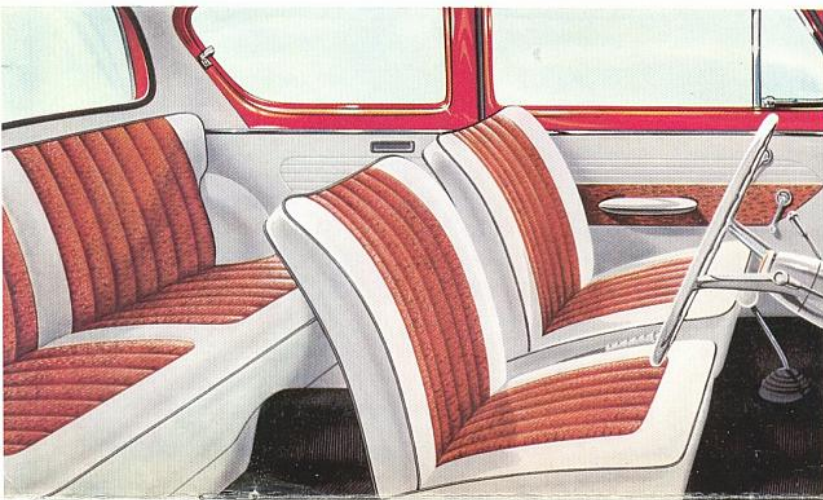


THE ALL-NEW

Anglia is a car for all-new relaxation . . .

Here is relaxing comfort for driver and passengers. The trim front seats have a soft but shape-keeping plastic foam overlay—and the adjustable driving seat position is perfectly planned for both restfulness and control. The rear seat has placement, height, depth and width for uncramped travel pleasure—and rear window design contributes to extra headroom. Opening

rear windows and front quarter windows allow draught-free ventilation throughout the car. There are padded arm rests on the doors. The smartness that is allied with all this comfort is accentuated by a selection of two-tone trims—discreet or gay. The upholstery material is in washable, durable vinyl and woven fabrics. No other economy car can offer luxury like this.



Every comfort, security and safety!

- Enormous 43-inch wide doors
- Three ashtrays for the convenience of front and rear passengers.
- Electrically operated windshield wipers.
- Cushioned comfort seats
- Specially safety-padded sun visors
- Rotary type door locks
- Large 10 cubic feet capacity boot
- Luxury interior trim and appointments.

BIGGEST AND SAFEST DOORS EVER.

For front or back seat, entry and exit are effortless. Here is a light car with enormous doors—actually 43 inches wide! You can move quickly, effortlessly and with space to spare—without knocking heads or knees, or snagging stockings. These excellent doors obediently stay open as required or shut with a gentle click. Children cannot reach catches from the rear seat.



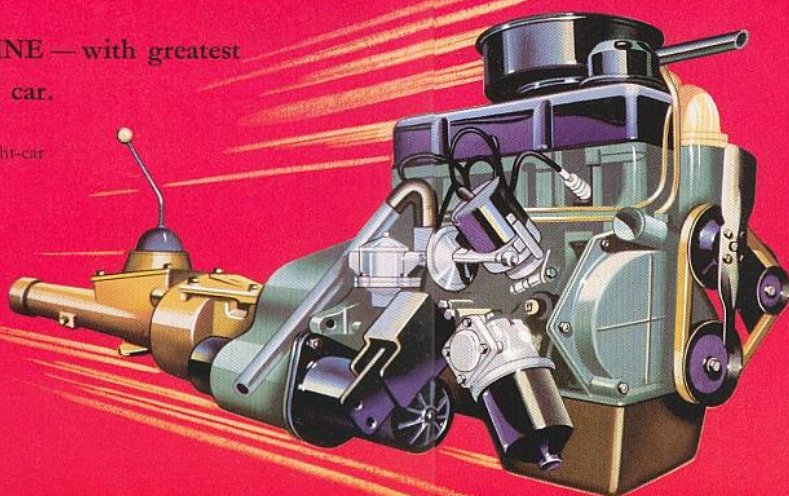
All-new and all-better in every aspect of performance!

EXCITING NEW O.H.V. ENGINE—with greatest power zest ever given to an economy car.

Anglia's all-new engine brings a new jet-age feeling to light-car motoring—an exciting new power-burst to accelerating—a new effortless ease and smoothness in fast cruising.

Sit behind this 997 c.c. O.H.V. oversquare engine and feel this new kind of driving—the impulse that speeds you from 0—60 in 29.5 seconds, the docile flexibility that idles you through city traffic.

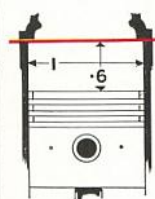
Thirty-nine nimble brake-horsepower developed at 5,000 r.p.m., extra-large easy breathing valves, over-square combustion chambers contoured for high thermal efficiency—all give a new sensation of flexible, dependable power.



WHAT ANGLIA'S ULTRA-MODERN PRINCIPLE OF ENGINE DESIGN MEANS.

0.6:1 "Oversquare" STROKE:BORE RATIO

The short piston travel in relation to cylinder width reduces engine wear, maintains maximum fuel economy, quiet running and long life. Most important advantage—it creates sparkling performance!



EXCITING NEW 4-SPEED GEARBOX transmits this eager, instant power more efficiently—and with the easiest changing ever.

There's a new exciting feeling about driving with Anglia's all-new gearbox and new hydraulically operated single dry plate clutch. Here is a fast, flexible transmission—the most exciting in light car motoring—a 4-speed synchro-silent sports type with short floor lever shrewdly placed for swift, easy racing change.

Every mile you'll drive you'll find reasons why Anglia

is the world's most exciting light car.





Bumps lose their bounce, stable control is easier, surer!

The new Anglia will provide you with the safest, smoothest ride you've ever experienced in a light car. Anglia's suspension system, with full fender depth coil springs at the front, and longer semi-elliptic leaf springs at the rear ensures a soft, even glide-ride over any surface.

Whether you are driving alone, or have a full complement of four on board, you will enjoy a comfortable ride with secure road holding, and no tendency to oversteer on corners. The durability and smooth performance of all-new Anglia's suspension have been proved beyond all doubt in the roughest, most gruelling tests ever made on a light car. On the right are the four factors that account for Anglia's new glide-ride and fine roadholding ability.

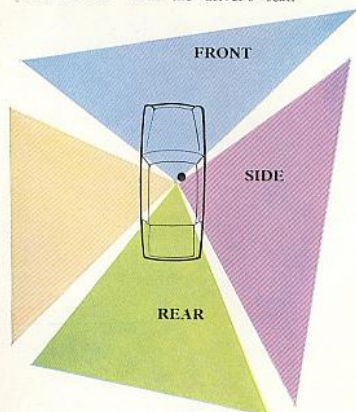
1. Built-in independent front wheel suspension with special hydraulic double-acting shock absorbers and anti-roll torsion bars.
2. Extra-stable balanced rear suspension, by two longer, longitudinal semi-elliptic leaf springs.
3. Both front and rear passengers are cradled well within the wheelbase — protected against jolts, and where there is a minimum of rolling movement.
4. Well balanced weight distribution (55% to the front, 45% to the rear) and low centre of gravity provide a more stabilised ride and sure, trustworthy handling qualities.



A new glide-ride with a combination of smoothness and stability factors

ALL-SEEING VISION

Slim pillars and expansive safety-glass areas give perfect all-round visibility. All four extremities of the all-new Anglia can be seen from the driver's seat.



PENDANT FOOT CONTROLS

Foot controls are easy to operate and positive in action, with light pedal pressures. Brake, clutch and accelerator pedals are of the pendant type with no holes in the floor to allow draughts or water to seep through into the car.



BIG, SMOOTH BRAKES

Modern super-safe brakes provide smooth, positive stopping-power with the least physical effort by the driver. In all weather conditions the brakes ensure a long life in stop and go city traffic or at high highway speeds. Handbrake is between the two front seats.



32 FEET TURNING CIRCLE

All-new Anglia's 32 ft. turning circle makes parking and tight manoeuvring effortlessly easy. With all four extremities of the car clearly visible from the driver's position, Anglia is the easiest ever car to handle in narrow streets and the worst traffic congestion.



RECIRCULATORY BALL-TYPE STEERING

Anglia's new recirculatory ball steering gives entirely easier and more precisely controlled turning. It completely eliminates transference of undesirable jarring road shocks through the steering column, yet retains full, positive "feel of the road" controllability.

SMARTNESS PLUS UTILITY IN THE TAIL-LIGHT DESIGN

The Anglia's smart new tail-light assemblies incorporate reflectors and rear stop-and-turn lights. Their uppermost tips are clearly visible from behind the wheel, and enable the driver to judge the precise length of his car when backing.



FRESH AIR FOR REAR-SEAT PASSENGERS

Fully opening rear side windows provide better ventilation for rear seat passengers. The volume of ventilation is easily controlled by the new-style easy-to-adjust fasteners. These fasteners are also designed to be entirely thief-proof.



NO LUGGAGE PROBLEMS

A large, wide, deep boot with a capacity of 10 cubic feet, and every inch usable! Here there is room aplenty for two large suitcases and a golf bag — and a whole lot more besides. The lid opens higher and wider for easy accessibility.



Every feature is a reason why Anglia is the world's most exciting light car



SPECIFICATIONS:

ENGINE:

Four Cylinder O.H.V. Bore 3.187" — Stroke 1.906". Cubic Capacity 60.82 cubic inches (997 c.c.). Compression ratio 8.9:1. B.H.P. (nett) 39 at 5000 R.P.M. Torque 52.5 lb/ft at 2,700 R.P.M. Three bearing hollow cast crankshaft. Push-rod operated overhead valves with integral guides. Machined combustion chambers. 3 ring autothermic pistons, chain driven camshaft with hydraulic tensioner. 3 point suspension of rubber on engine and gearbox.

Lubrication: External rotor type pump with full pressure to main, big end, camshaft and rocker bearings. Full flow externally mounted filter. Capacity of system 4 imperial pints.

Cooling: Pressurised, belt driven fan and water pump, thermostat control. Tube and fin radiator. Capacity 10½ imperial pints.

Fuel System: Down draught carburettor with air cleaner, cam operated diaphragm pump and sediment bowl. Tank capacity 7 imperial gallons.

Ignition: 12 Volt oil filled coil, automatic advance and retard with additional vacuum control.

TRANSMISSION:

Single dry plate clutch, cushioned hub. Hydraulic clutch release. Remote control floor gear change.

Gearbox: Four-speed, synchromesh on second, third and top. Overall ratios — 16.987:1, 9.884:1, 5.826:1, 4.125:1 (direct). Reverse 22.292:1.

Drive: Open, with needle roller universal joints.

Rear Axle: Semi Floating. Pressed steel banjo housing, with hypoid gearing. Ratio 4.125:1.

SUSPENSION:

Front: Independent coil springs mounted on special telescopic double acting hydraulic shock absorbers. Torsion anti-roll bar incorporated.

Rear: Longitudinal, asymmetrical semi elliptic springs with hydraulic double acting lever type shock absorbers.

BRAKES:

Hydraulic internal expanding 8" diameter. Two leading shoe on front, leading and trailing on rear. Total lining area 76.8 square inches. Service or foot brake on all four wheels, handbrake on rear wheels only.

FORD QUALITY ACCESSORIES

Radio — Push Button and Manual Tuned Models. Remington Auto — Home Shaver.

For extra beauty and distinction: Plastic Seat Covers. Rear Venetian Shades. Overrider Kits. Wheel Trim Discs and Hub Cap Medallions. Grille Badge and Hood Mascot. Exhaust Deflectors. Styletone Mouldings. Full range of Supersheen 'Car Care Cosmetics' and Maintenance aids.

More lights for safety and convenience: Safety plus with extra lights — Foglamps, Longrange Driving Lamp Kits, Reversing Lamp Kit.

Ford Motor Company of Australia Pty. Ltd., whose policy is one of continuous improvement, reserves the right, subject to such regulations as may from time to time apply, to change specifications and prices at any time without notice or incurring liability to purchasers.

FORD MOTOR COMPANY OF AUSTRALIA PTY. LTD.

(Incorporated in Victoria) Registered Office: Geelong, Victoria.

STEERING:

High efficiency recirculating ball type, ratio 14:1, two spoke steering wheel, safety design.

WHEELS & TYRES:

Pressed wheel with wide base rims, tyres 5.20—13 tubeless, tubed optional.

ELECTRICAL:

Two brush generator, compensated voltage control. Horn, operated by button on steering column antennae. Battery 12 Volt, 38 amp/hr at 20 hour rate, located under engine hood.

INSTRUMENTS:

Located in panel directly in front of driver, includes speedometer, odometer, fuel gauge, temperature gauge, and ignition, oil pressure, main beam and direction indicator warning lights. Panel light.

CONTROLS:

Choke, key operated ignition/starter switch. Turn and pull lighting switch. Windscreen wiper switch, dip switch on steering column. Hood lock control.

BODY:

All steel welded integral construction. Safety glass all round. Curved windscreen. Reverse incline rear window. Hinged no-draught front ventilator windows with press button safety catches. Opening rear quarter windows. Press button door handles, exterior lock on driver's side, inside lock on passenger door. Padded arm rest/door pulls. Two-tone door and seat trim. Separate bucket type front seats. 4 inch adjustment on driver's seat. Separate lockable luggage compartment approximately 10 cubic feet capacity. Spare wheel located vertically behind rear seat in luggage compartment.

GENERAL EQUIPMENT:

Two safety padded interior sun visors. Combined door operated courtesy light and interior light. Ash tray in fascia panel and two in rear compartment. Lockable glove box. Dual electric windscreen wipers. Moisture proof hooded headlamps 50/40 W. Separate side lamps incorporating flasher turn indicator lamps. Twin tail and stop lamps. Flasher direction indicators with self cancelling arm on steering column. Interior Rear View Mirror. Provision for fitting fresh air heater and demister and radio.

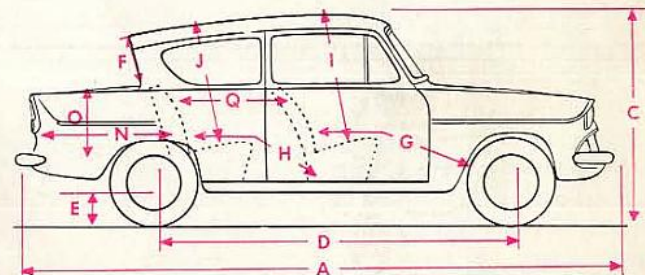
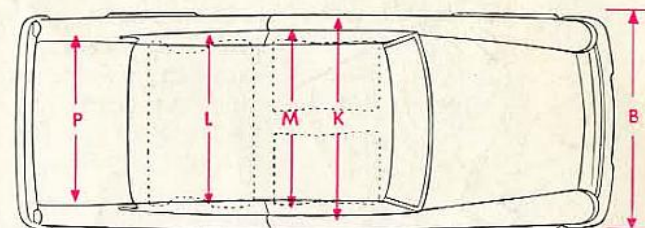
Trouble Lamp, Engine Compartment Light.

Practical motoring aids: Exterior Sun Visor. Fresh Air Heater and Ventilating Systems. Weather Shields. Windscreen Washer Kit. Mirrors — a large range of De Luxe, Rear Vision and Vanity Mirrors. Hydraulic Jacks, Licence Plate Frames, Petrol Tank Locking Cap, Rubber Floor Mats, Foot Tyre Pumps, Cigarette Lighters.

Auxiliary Instrument Panel Assembly (Comprises oil pressure gauge and ammeter).



DIMENSIONS



A. Length	153.5"	L. Hip Room — Rear	43.0"
B. Width	57.3"	M. Shoulder Room — Front	44.8"
C. Height—(Unladen)	56.5"	N. Luggage compartment—	
D. Wheelbase	90.5"	Max. Length	30.25"
E. Ground Clearance	6.4"	O. Luggage Compartment—	
F. Rear Window	10.5 x 41.25"	Height	18.75"
G. Leg Room — Front	44.34"	P. Luggage Compartment—	
H. Leg Room — Rear	37.84"	Width	54.00"
I. Head Room — Front	33.7"	Q. Back front seat—	
J. Head Room — Rear	32.95"	front back seat	26.4"
K. Hip Room — Front	50.5"	R. Kerb Weight	1625 lbs. (approx.)

FORD'S 4-WAY BETTER SERVICE

There are four important advantages in the after-sale service from Ford Dealers, increasing further still your satisfaction in owning Anglia. Ford Dealers send their mechanics to Ford Factory Service Schools. They have time-saving equipment designed for Fords. Dealers follow Ford factory approved servicing methods, and use genuine Ford parts. And wherever you go, Ford Service keeps your Anglia in top condition at minimum cost.