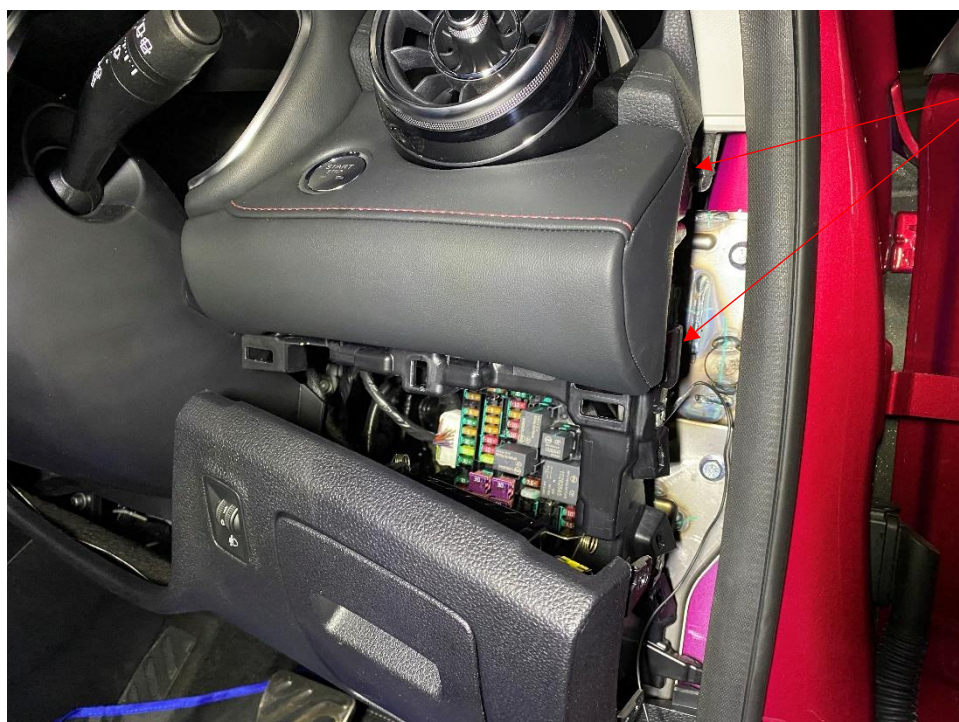


## MG HS Garmin Dash Cam Fit With Parking Mode Cable



Remove this panel first.  
Drivers side dash end cover



Remove the two self-tapping screws, this will then allow you to prise down the driver's side lower dash panel. A little force is needed but it does pop off.

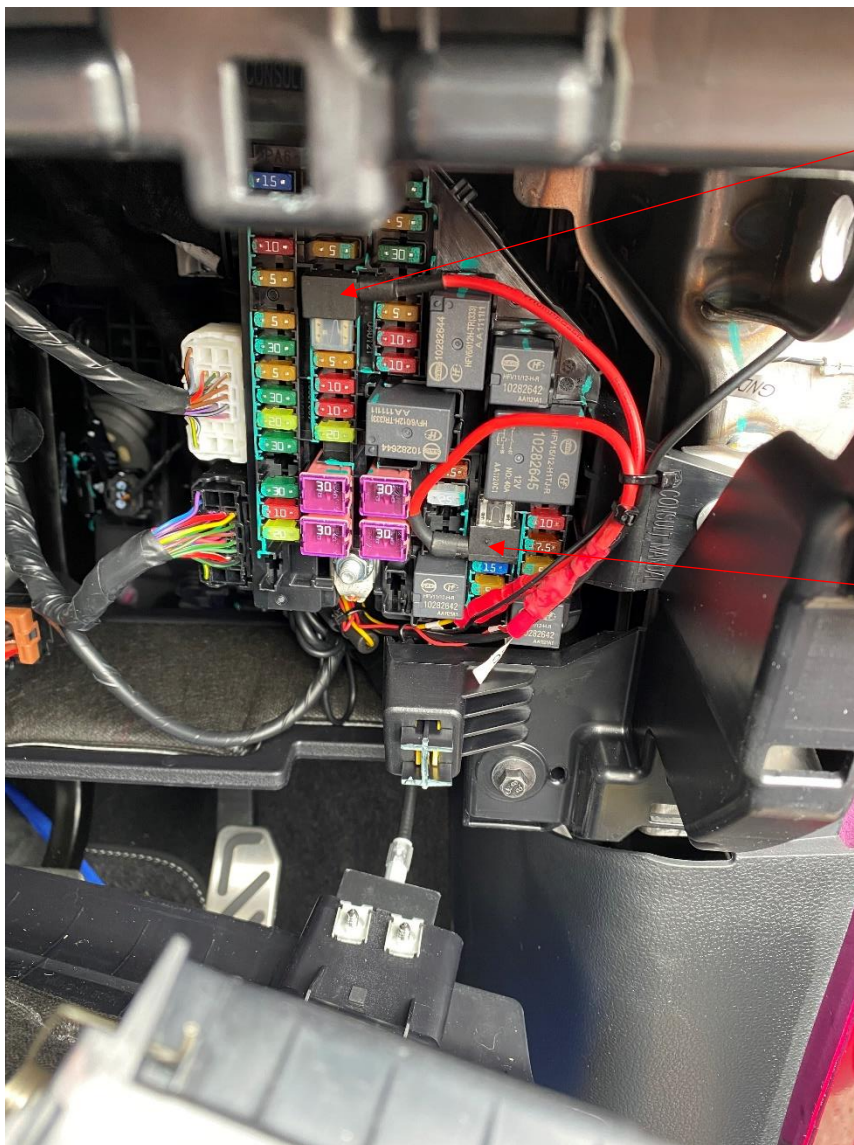
Behind this you will find the fuse panel.





Three wires on the parking mode cable  
BATT - ACC – GND

For simplicity I have used two piggyback blade fuse holders.



BATT connection.  
Permanently live.

ACC connection.  
Only live when the ignition is on.





Prise off the  
above mirror  
cover and route  
the cable from  
the dash cam into  
the void.



And then out of  
the void space  
into the head  
liner at the top of  
the windscreen.



Run the cable around the head liner to the driver's door front pillar. It slides in quite easily with the use of some trim tools.

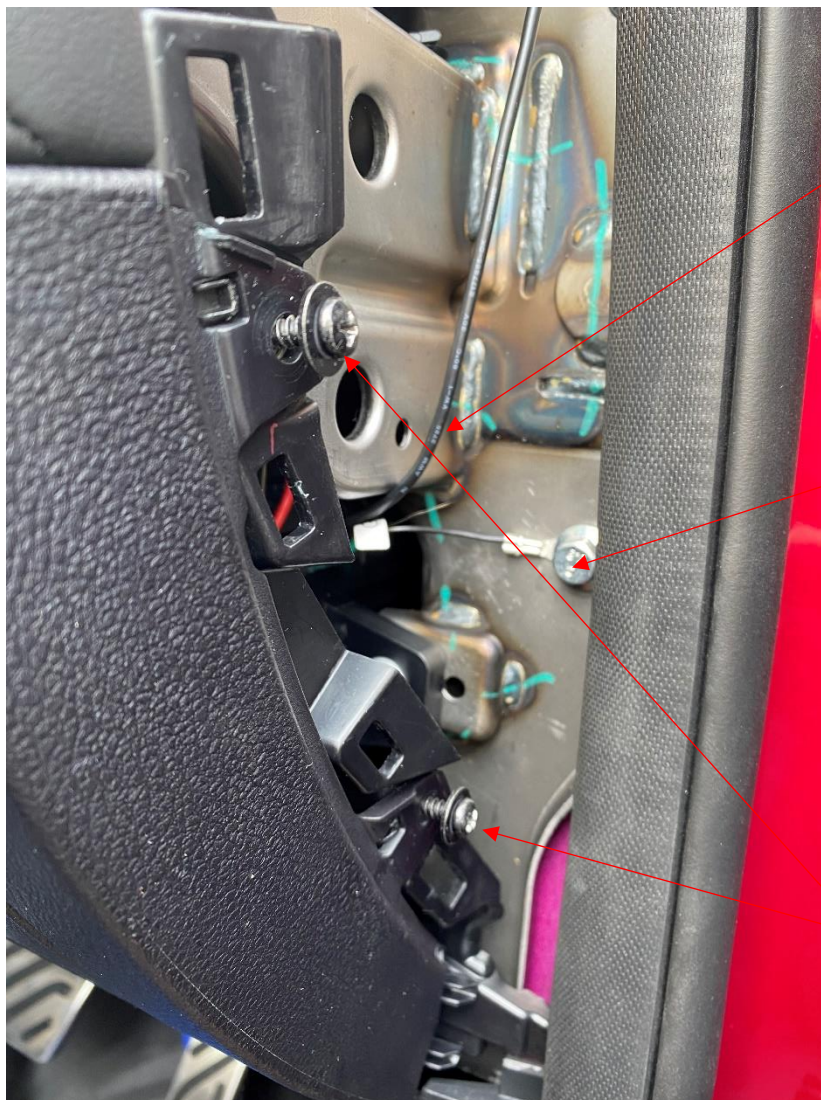


Pull off a section of the driver's door seal revealing a gap between the frame and interior trim. Route the cable in the gap.





Exiting the trim cover at the bottom. Next to the first panel that you removed



Cable route to the fuse panel

GND Point

These are the two screws that need to be removed before attempting to prise down the lower dash panel.





Clip back in place the lower dash panel. Replace the two self-tapping screws under the dash end cover and clip the cover back on. Push the door seal back in place. Job done.