

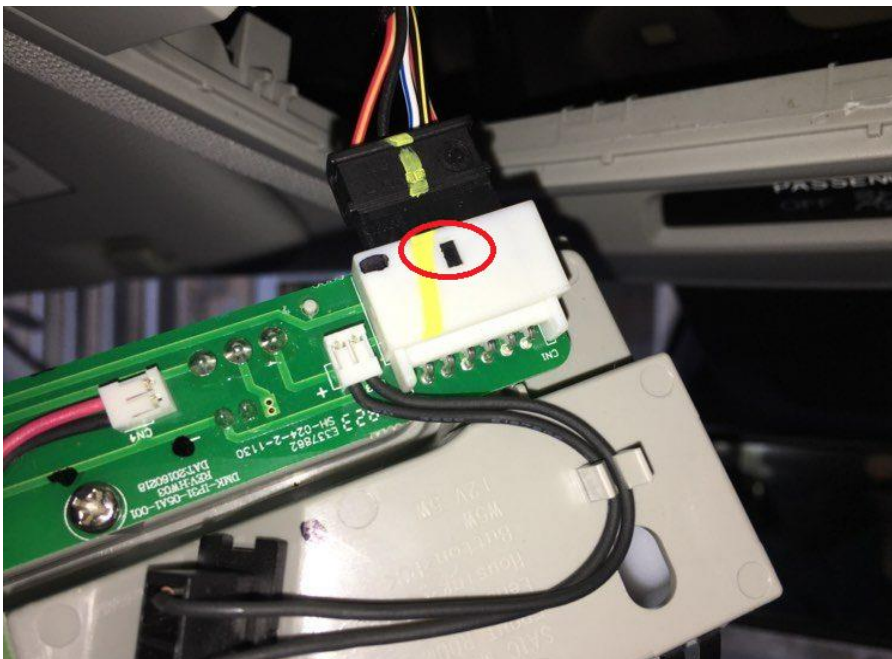
## Installing Rear Cabin Lights into the MG ZS EV

**PERFORM THIS UPGRADE AT YOUR OWN RISK!**

1. Remove front cabin light cluster with a pry tool or thin screwdriver.



2. You will need to get a fine screwdriver and press the black stopper on the main connector to release this.

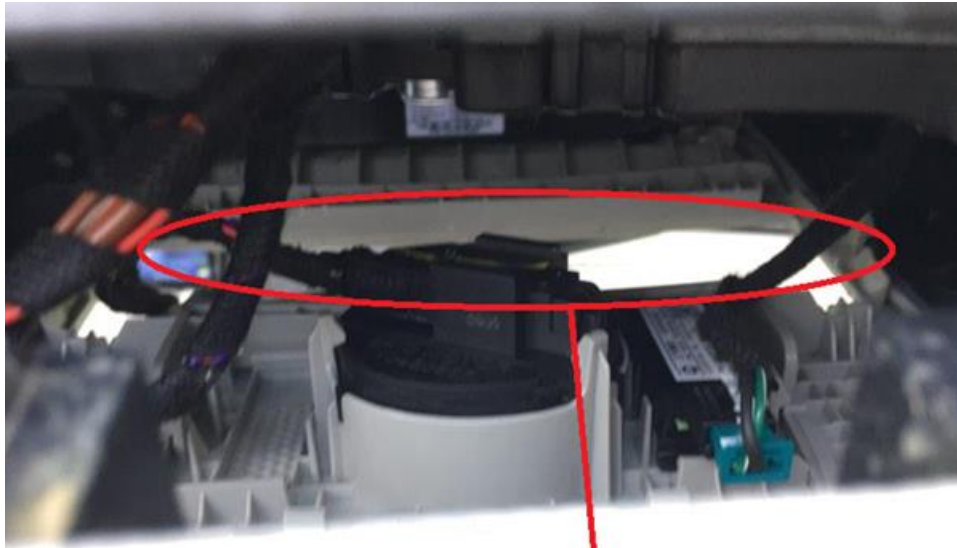


3. Place the main lightning terminal block to one side.



4. Open sky roof. At this point I sat on centre arm rest with head sticking out of sky roof and pulled down on the roof liner which is held in place by strong Velcro and clips to create a gap to feed the wires through.

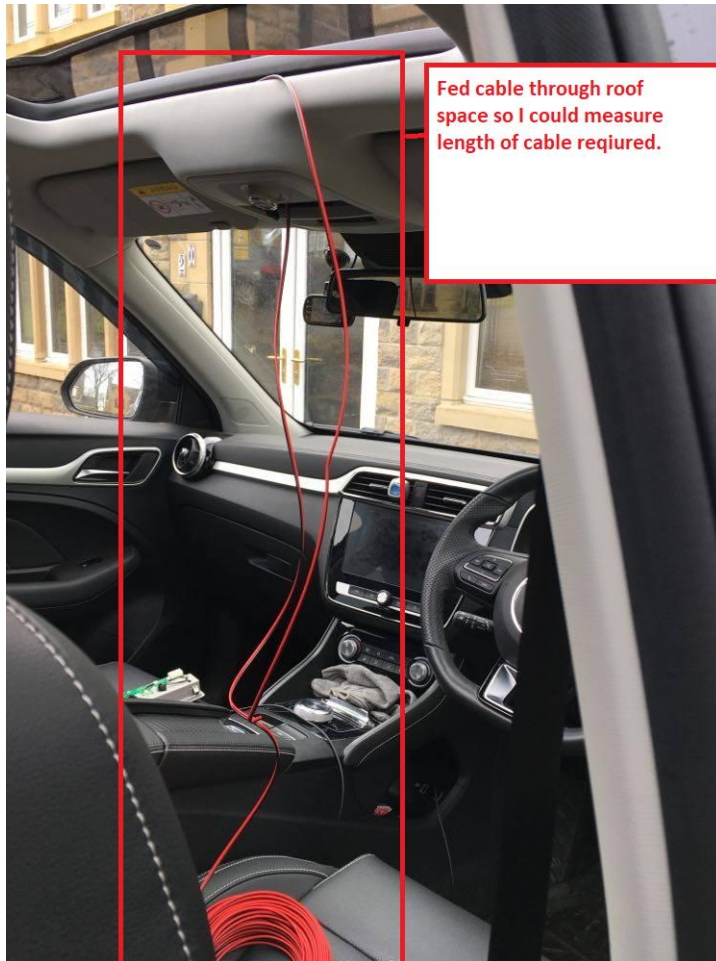




Gap in to cabin that you can use  
to feed electrical cables through.



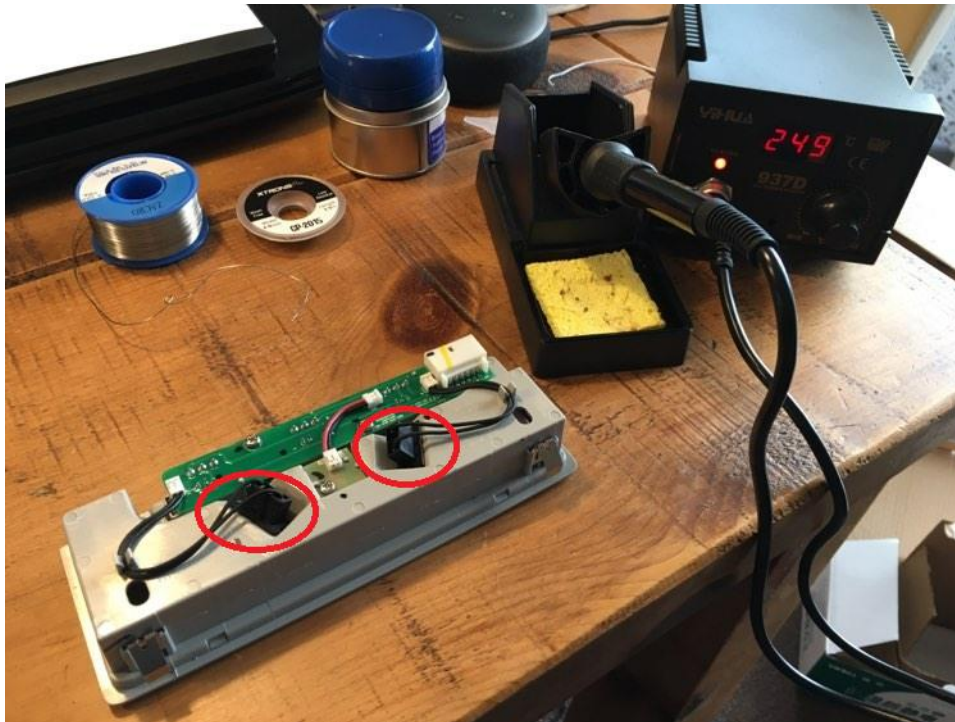
5. Next, feed the cable through the roof space whilst pulling down on the roof liner to allow cable to pass through and then roughly measured the required length of cable required on driver's side and then cut two lengths of this for both sides.



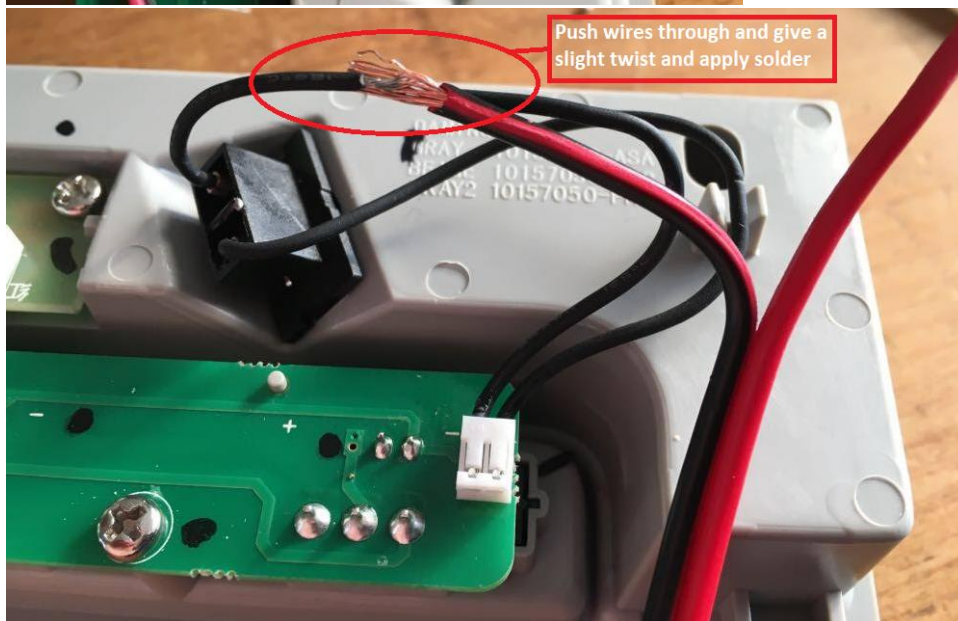
6. About 92 inch or 235cms. After install I had more cable than I required so you may wish to cut yours shorter as I simply tucked the this back into the roof liner.



7. I took the front light cluster inside and began the soldering process.



8. After a couple of attempts to directly solder my extension wires to the front pins powering the LED cabin lights, I gave up so instead I decided to bare the two black wires on each side that feed the cabin LED's and solder my extension cables.



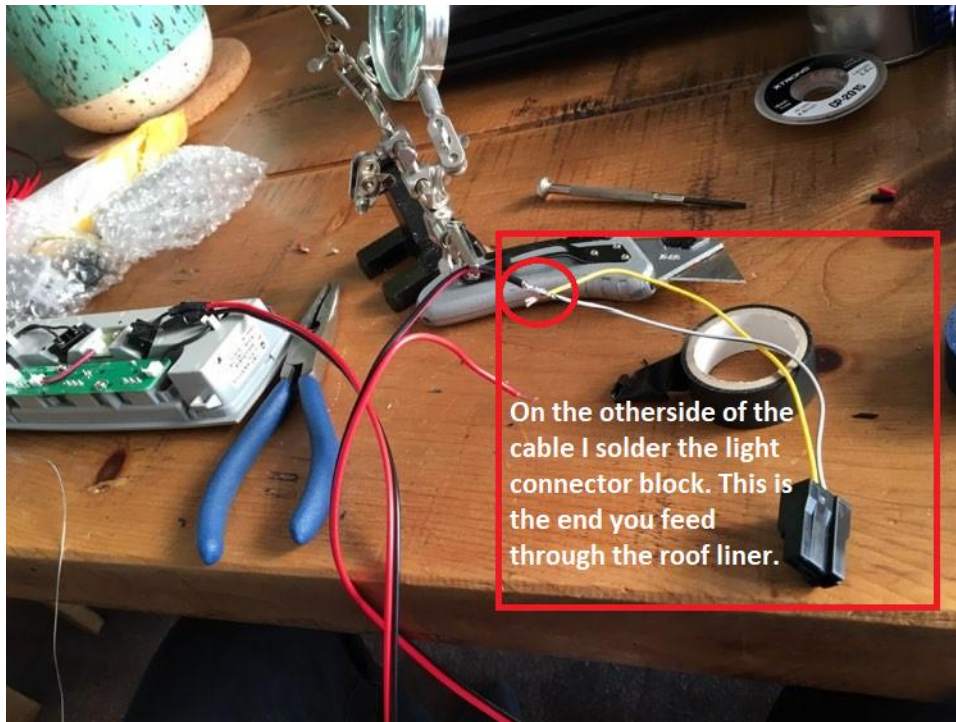
9. Bare all 4 black cables (both pairs at each side) and follow the same process of pushing wires through and then solder and cover using



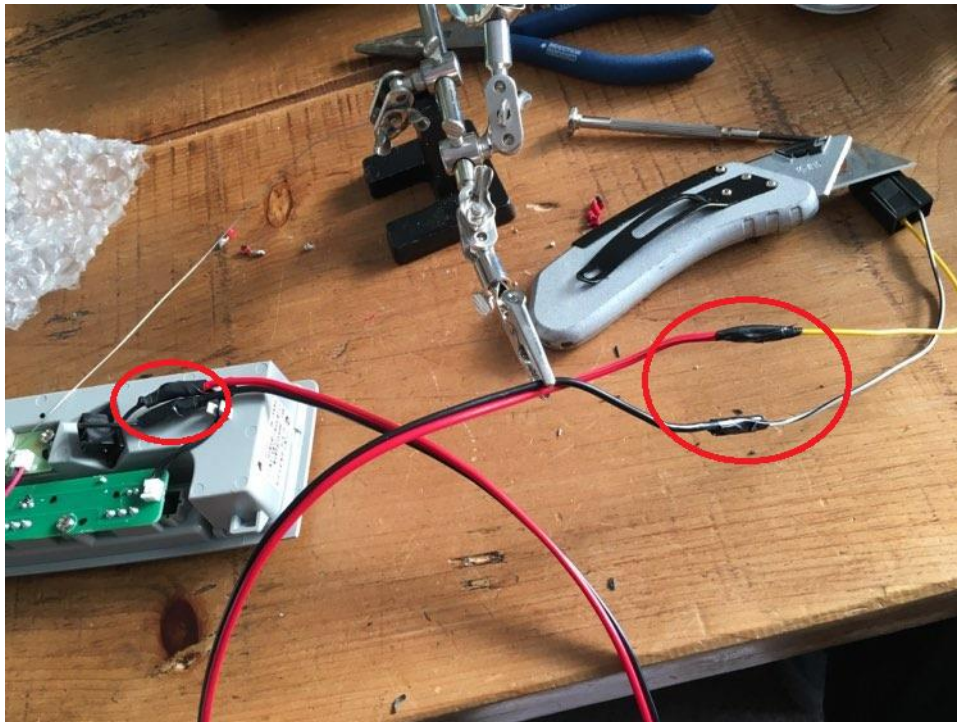
electrical tape to protect the join (or shrink wrap if you can be bothered). I also put electrical tape of both wires to tidy and then clipped the thin black wires into the retainer.



11. On the other end of the cable I soldered the light fitting connector block which is fed through the roof liner via the gap created near the rear-view mirror. Repeat process for left side.



12. I also put additional electrical tape to join each of the wires and to tidy these up.





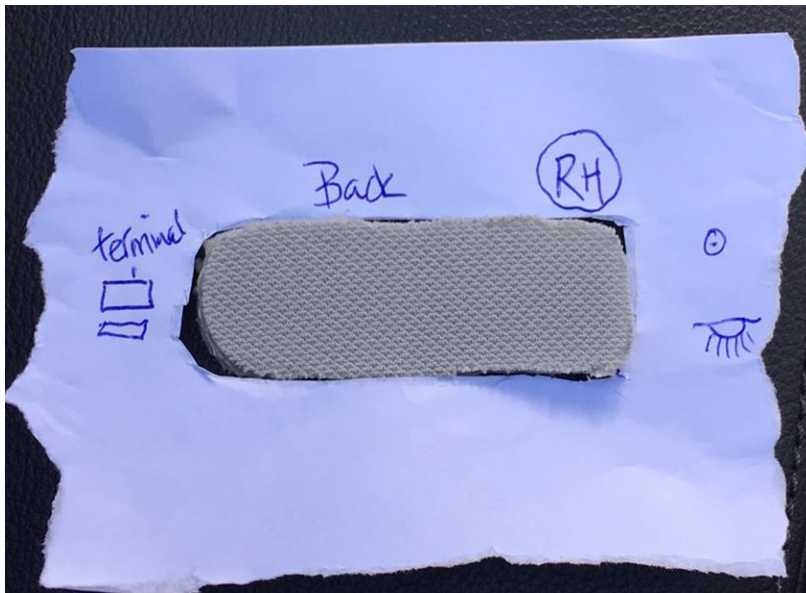
13. Take the front light cluster back to the car and feed the left and right rear light connector blocks through the light cluster cavity near rear view mirror via the roof liner. Push the main light cluster back into position.



14. Next step was to expose the grab handle 8mm bolts using a fine flat head screwdriver. I loosened the bolts, but before pulling the handles free from the roof liner I offered up my crude rear light paper template. When I was happy with the position of the template, I used a pencil to mark out the roof liner cut line.



This is the template of the back of my new light fitting which I used to mark out pencil cut line on to the roof liner between grab handle.



15. Next, stand outside the rear driver side door and using your fingers pull the roof liner free of the rubber seal.



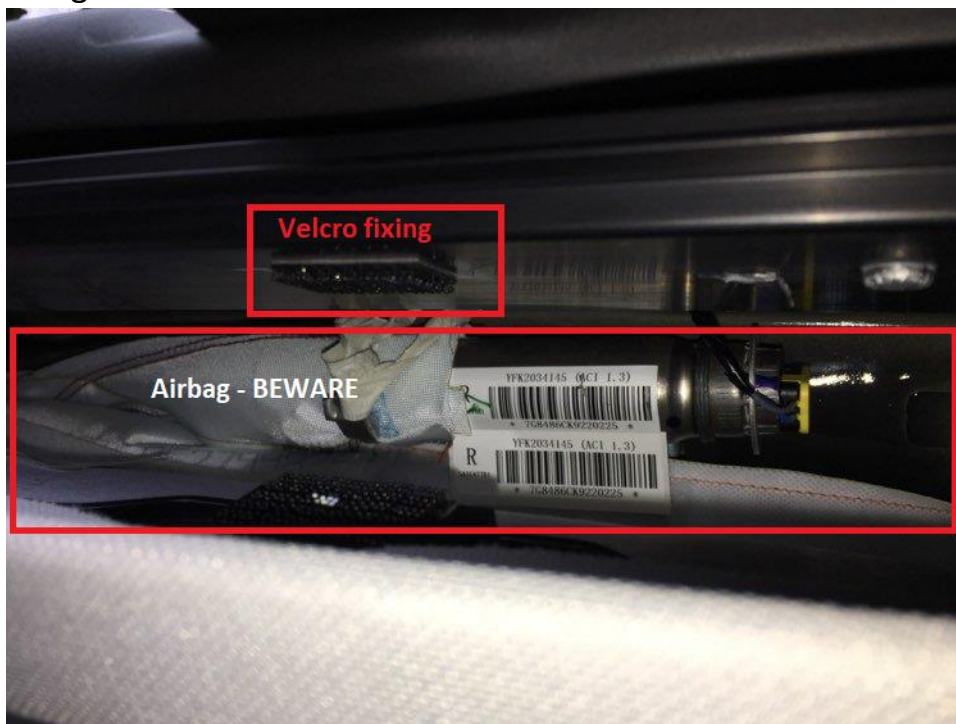


16. Remove grab handle bolts pull handle free.



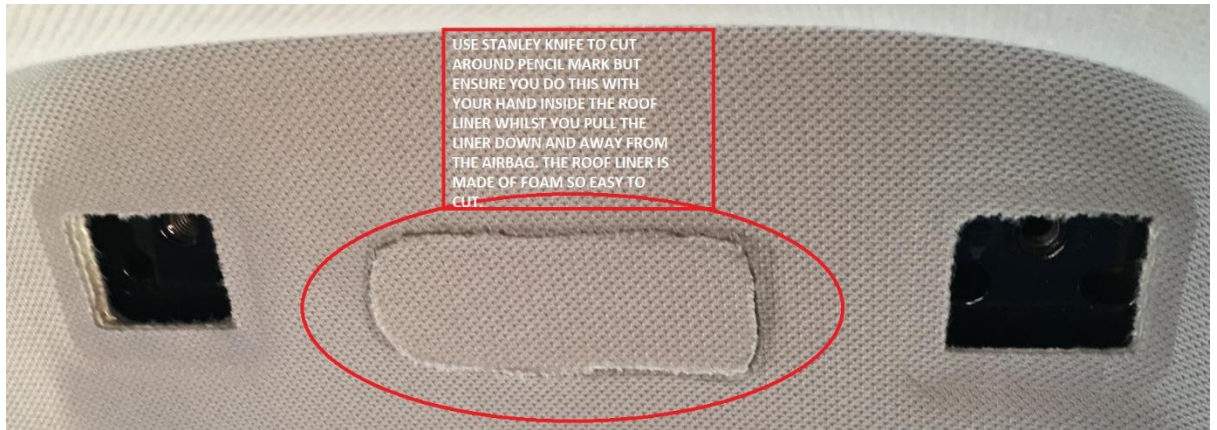


17. Now pull the roof liner in a downward motion to free this from Velcro fixings.

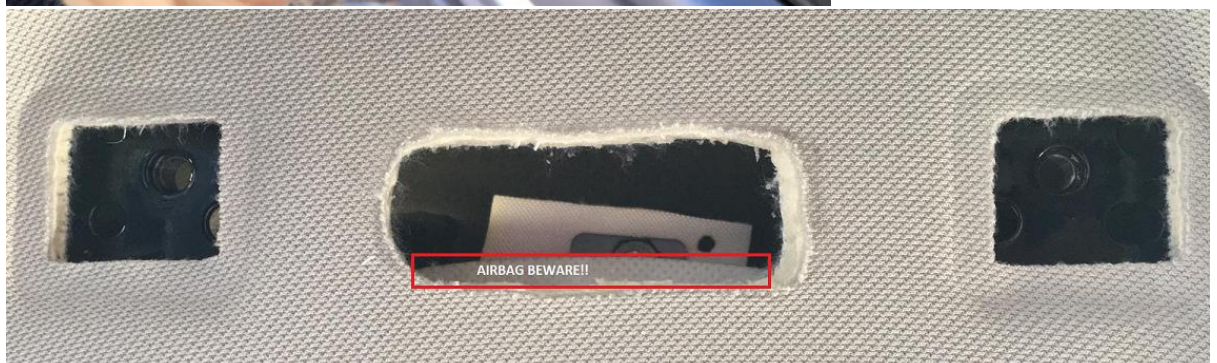


18. Use Stanley knife to cut around the pencil mark but ensure you do this with your hand inside the roof liner whilst you pull the liner down and away from the airbag. The roof liner is made of foam, so it is easy to cut through.





19. Remove roof liner foam. It might help if you slide your hand between rubber seal and roof liner to push excess foam out and repeat on other side.





20. Now you are free to feed the rear light connector block around to the required position and feed through roof liner and out of the newly created hole. Note – when feeding cable around roof liner you will need sky roof open. It's recommended to pull down on roof liner to release Velcro fixings and as you feed the wire around the sky roof push the wire behind the Velcro and when in place push upwards to secure clip/Velco back in place as this helps secure the new wires away from view between bodywork and roof liner.
21. Having now pulled the light connector block through the hole you can connect the light up (I had pre-loaded fitting with LED C5 bulbs). Carefully offer the new light fitting up to the hole you have created and as you do this you may need to cut small amounts of foam from around the edges to allow the light fitting to drop tightly in place. Note – the connector block that attached to my light fitting was causing some fitting issues as it was in contact with metal body work and would not allow me to place the fitting into its correct position, so I removed the connector block and connected the bare wires on to the light fitting contacts and insulated them which allowed the light fitting to drop securely in to place. Now fix grab handles back in to position and secure 8mm bolts and repeat for both sides.



22. **WE HAVE LIGHT/S IN THE REAR CABIN OF THE MG ZS EV!!**

